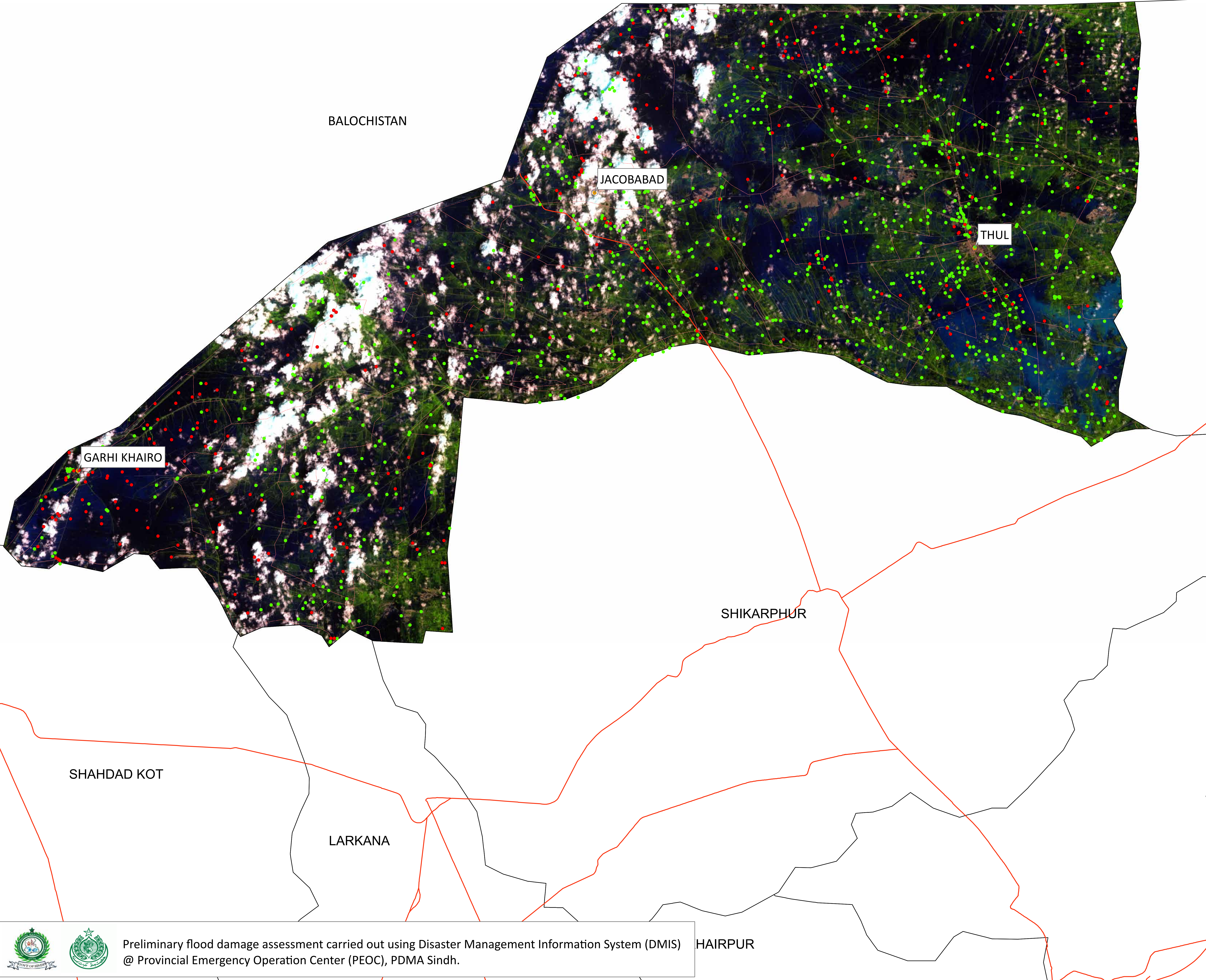
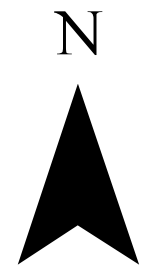


Flood Inundation in Jacobabad District



District Profile

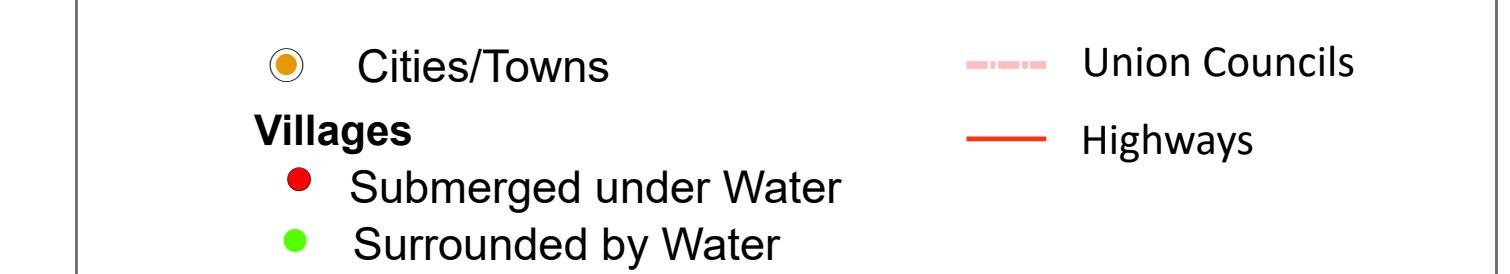
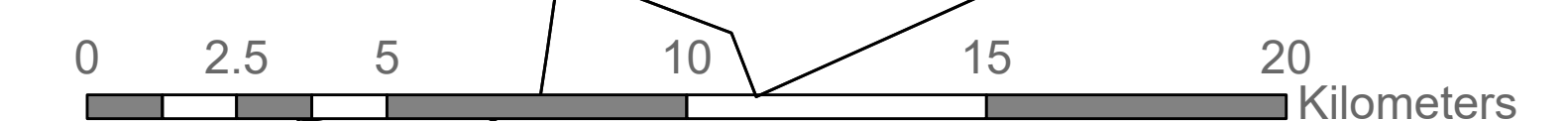
District Area	2769.36 Sq.Km	63.78%
Area Inundated	1766.36 Sq.Km	
Crop Land	573703.08 Acres	63.52%
Crop Land Inundated	364405.84 Acres	
Rainfall (Jul-Aug)	811 mm	
Population (as per 2017 Census)	993,822	
Affected Union Councils	42 Out of 42	

UC-wise Affected Villages

Name	Submerged in Water (No.)	Surrounded By Water (No.)
ALLAHABAD	50	23
AHMEDPUR	26	29
ALLANPUR	23	45
KOT JANGATO	20	50
KHUDABAD	19	34
KARIM BUX	16	57
MISRIPUR	12	34
DASTI	11	32
GARHIKHAIRO	11	13
MIRANPUR	10	42
NAWERA	10	23
BACHRO	9	70
DINPUR	9	40
MIRPUR	9	30
JOUNGAL	8	55
LOGI	8	29
MOHAMMADPUR	8	25
BALOCHABAD	7	55
QADIR PUR	7	36
RINDWAHI	7	30
TAJO KHOSO	7	18
MUBARAKPUR	6	51
THUL NAO	6	34
TOJ	6	39
GARHICHAND	5	54
RANJHAPUR	5	23
RAMZANPUR	4	32
SAIDOKOT	3	24
SHERWAH	3	57
GARHI HASSAN	2	28
HAMAYUN	1	6
JAMALI	1	1
WARISDINO MACHHI	1	3
JAGAN	-	4
JAHANWAH	-	5
MIAN SAHIB	-	4
THUL-II	-	19

Disclaimer: 30m resolution satellite image has been used for preliminary damage assessment and depicts status of flood inundation as of image acquisition date. Due to the presence of clouds over some parts of the district inundation delineation may be affected. The Union Council boundaries in names used in development of this product were obtained from Board of Revenue, Sindh.

Source: Landsat 9 Collection 1, 28th August 2022 5: 56 GMT



Preliminary flood damage assessment carried out using Disaster Management Information System (DMIS) @ Provincial Emergency Operation Center (PEOC), PDMA Sindh.